

# CREATING CONNECTIONS

The newsletter of  
Community United Methodist Church

Pastor's Pen



## Perseverance

June 2022

### Inside this issue:

Pastor's Pen	<b>1-2</b>
Eva and Gramps sing-	<b>2</b>
Good Neighbor Experiment	<b>3-4</b>
United Women in Faith	<b>4</b>
SPRC	<b>5</b>
Parsonage Deck	<b>5</b>
A Great Multitude	<b>6-7</b>
Billie's Card Center	<b>7</b>
Jeans for June	<b>8-9</b>
Website Maintenance	<b>10</b>
Mission of the Month	<b>11</b>
June birthdays,, sched-	<b>12</b>
June Calendar	<b>13</b>
Monthly Devotional	<b>14</b>

When I saw this pretty plant growing out of rock alongside of one the trails Teresa and I hiked at Zion National Park I thought to myself: that's perseverance. Somehow, a seed from this plant found a small crack in this rock, took root, and grew in spite of its obviously hostile environment. It had a place in God's plan and was provided exactly what it needed to thrive and produce. It reminded me of one of my favorite New Testament passages.

In the Apostle Paul's letter to the church in Rome he writes about peace and joy. He says that since we have been justified through faith, we have peace with God through our Lord Jesus Christ, through whom we have gained access by faith into this grace in which we now stand. He says that we rejoice in the hope of the glory of God. He then says: *Not only so, but we also rejoice in our sufferings, because we know that suffering produces perseverance, perseverance, character; and character, hope.* (Romans 5: 3, 4) And he points out, hope does not disappoint us, because God has poured his love into our hearts by the Holy Spirit, whom he has given us.

We're slowly coming out of over two years of the COVID-19 pandemic that has unarguably changed many of the way we do things and how we look at life. To say we were unexpectedly thrown into a hostile environment would be an understatement. But we, as a church and a congregation, persevered. We persevered because of the hope of the glory of God. It's hard to say that we rejoiced in our sufferings as we were forced to shut our doors with no time to prepare. But we knew that this suffering would produce perseverance. We didn't give up and looked for a new way to reach not only our regular Sunday attenders but a new audience that was looking for some hope and assurance that this too would pass. That two-year struggle learning how to do Facebook Live on the fly was certainly a character builder as we were constantly plagued by technical glitches and "operator" error, but we persevered to the point where we now have a multi-camera Zoom production which has provided us with a platform upon which we can build and effectively reach more spiritual seekers. But it wasn't only in finding a way to continue having services on Sunday morning where we persevered.

Continued on page 2

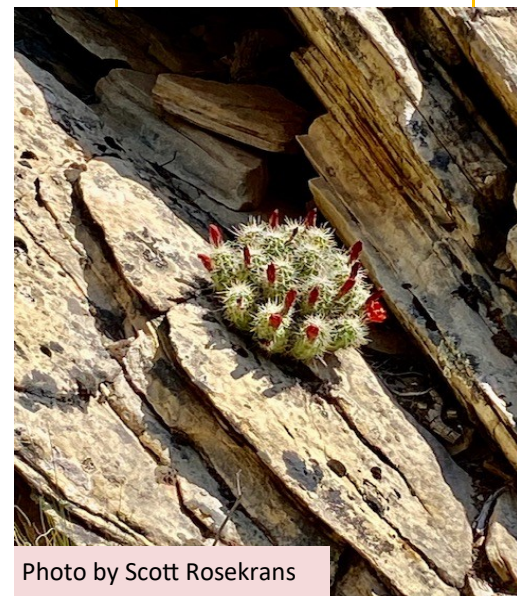


Photo by Scott Rosekrans

We persevered in producing fruit. We found ways in which we could not only continue our outreach and missions but expand them to an even greater population in need giving not only us hope but hope to those out in our community who were really having a tough time. Using safety protocols our volunteers continued in their soup, fire starter, and fleece blanket making ministries. And then God sent us some people who were looking for a place to establish a tiny home village for those who desperately needed a roof over their head and a door that locked. Without hesitation we gladly said yes, and Peter's Place became a reality. Realizing that these people needed more than a roof over their heads we had some very dedicated volunteers step forward to open up our mission rooms on Saturdays so people could come in and get much-needed clothing, bedding, food and other items. The support for this mission has paid dividends in so many ways. And the success of Peter's Place has led to the establishment of two other locations in Port Townsend designed to meet the needs of the housing challenged.

And this hope that we have experienced through our perseverance and character-building journey has not disappointed. Through this struggle God has poured out his love into our hearts by the Holy Spirit whom he has given us to lead and guide us in His service. And God has blessed us with many new faces who have been attracted to us because of what we do as we have established ourselves as the somebodies who do something in Jesus' name. So, like my little plant growing in the crack of a rock we need to take root and have faith that God will provide us exactly what we need to survive, thrive, and produce fruit. I am so looking forward to the next chapter in our church life as God provides us new opportunities to give hope, love, and joy to others.

Faithfully,  
Scott



Eva and Gramps singing This Is "The Day That The Lord Has Made".



By Lori Oberlander

You may be wondering about the Good Neighbor Experiment

What is this all about?

Can I still be involved?

How do I find out more?

The Good Neighbor Experiment (GNE) is a nine-month training process that provides churches like ours practical tools to forge more meaningful relationships with our community for long-term impact.

GNE aims to change out mindset from:

Programs to **relationship**

Scarcity to **abundance**

Inauthenticity to **joy**

What GNE is NOT:	What GNE is
• Theoretical	• Practical
• A church growth model	• A tool to grow
• A tool to proselytize	• A tool to build trust

Some of what other churches are saying about the Good Neighbor Experiment:

“GNE built relationships in our neighborhoods, but it also refined our mission as a church. It gave our 130-year-old church the tools we needed to have a fresh look at where God resides in our community.”

--Reverend Lora Andrews--

The people who attended have some great ideas on how to get started. We invite you to join the Neighboring movement here at Community United Methodist Church in Port Hadlock.

**It is not too late for you to get involved!**

Continued on page 4

To find out more about the GNE training process visit [neighboringmovement.org](http://neighboringmovement.org) or talk to Lori Oberlander or Kathi Vancamp before or after church or call or email to find out more information.

Keep your ears open for additional local plans around  
the Good Neighbor Experiment.



## UNITED WOMEN IN FAITH

(Formerly United Methodist Women)

### National Mission Institutions

By Diane Jensen

Nearly 90 national mission institutions, located across the country, empower women, care for children, educate youth, house the neglected, advocate for social justice, create economic opportunities and change neighborhoods. They are on the cutting edge of ministry. Members of United Women in

Faith support national mission institutions through our direct, hands-on volunteer work, through service on boards of directors and through our generous contributions. This is our unrestricted Mission Giving at work. It is our love in action.

A local national mission institution that is supported annually by CUMC's United Women in Faith is the Tacoma Community House.

Since 1910, Tacoma Community House has promoted social justice and today offers equity-advancing programs through immigration, education, employment, advocacy and housing.

It is a nationally respected, community-based service center for immigrants, refugees, and long-time South Sound residents seeking enrichment and pathways to self-sufficiency. For 112 years it has helped countless individuals gain the skills needed to transition out of poverty, navigate a new culture, and find personal and professional success.



## Staff/Pastor Parish Relations (SPRC)

By John Sweet, Chair

According to the UMC Book of Discipline the SPRC “is the administrative unit in the local church where staff and congregational interests are integrated to focus on the mission of the church...The SPRC serves as the ‘governing board’ in an advisory capacity related to personnel administration.”

Committee duties center around five topics:

1. Communication. This involves conferring with pastor and staff and being a conduit between the congregation and the pastor and staff.
2. Personnel Issues. SPRC recommends to the Council staff positions, job descriptions and personnel policies. This also includes compensation, vacation time, pension, housing, etc. The Committee recommends the pastor’s salary that goes before the charge conference in the fall.
3. Parsonage Issues. Along with the Trustees and Pastor make an annual review of the parsonage.
4. Annual Evaluation. The Committee provides an annual evaluation of the pastor and staff. This process begins at the first meeting of the year when the pastor and committee agree on priorities and focus for the year.
5. Appointment Issues. The committee confers with the district superintendent and bishop when it becomes time for the church to receive a new pastor.

The Committee meets once each quarter, and the agenda is written to address the duties of the committee as outlined above.

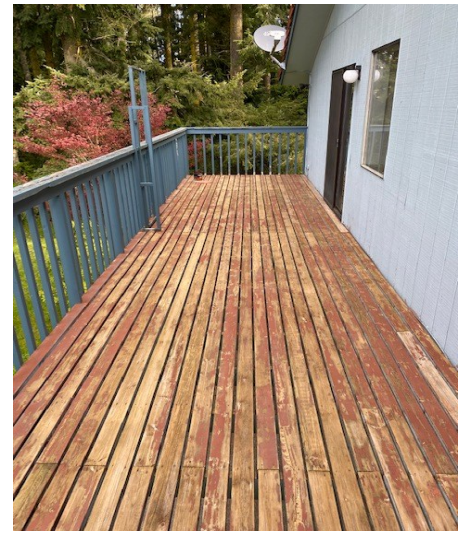
Committee members include AJ Laverty, Dale Kelley, Debbie Dodd, Diane Johnson, Joan Flowers, Diane Jensen, Marsha Hamacher and John Sweet.



### Parsonage Deck at a Glance

“Staining the parsonage deck”

Photos by Scott Rosekrans



## A Great Multitude

By Scott Rosecrans

After Teresa and I had finished what had been described as a moderate hike at Zion National Park in Utah (moderate if you've already hiked Mt. Everest) we took advantage of the shade provided by a huge tree outside the park lodge. We weren't the only ones enjoying the shade and as I lay there on the cool grass recovering, I listened to the conversations of those relaxing around me. I can't tell you what they were saying as they were speaking in languages I did not speak or understand. I heard what I believed to be German, French, Hispanic, Eastern European, and others. It was a great multitude of people from all around the world gathered to take in one of God's truly amazing creations. Everyone seemed happy to be there and I felt a commonality with them in spite of any language barriers. Truth be known, English was probably a second language for most of them, but I digress. Language is not a barrier to God.



Earlier in May I preached a sermon entitled: Where is this Heading? It was drawn from Chapter 7 of John's Revelation and, if you missed it or want to reread it you can find it on our webpage at: [hadlockchurch.com](http://hadlockchurch.com) under the Sermon Section. In any event, John is talking about a vision he had where, after seeing the 144,000-person remnant of the Nation of Israel, he saw a great crowd that no one could number. These people were from every nation, tribe, people, and language. They were standing before the throne and before the Lamb. They wore white robes and held palm branches in their hands as they cried out with a loud voice: "Victory belongs to our God who sits on the throne and to the Lamb." John records that one of the elders asked him who all these people were and where did they come from. John told the elder that he knew, at which point the elder answered his own question stating that these people had come out of great hardship and have washed their robes and made them white in the Lamb's blood. This, the elder said, is the reason they are before God's throne and that they worship him day and night in his temple. He tells John that they won't hunger or thirst anymore and that no sun or scorching heat will beat down on them. The Lamb will shepherd them leading them to the springs of life-giving water and God will wipe away every tear from their eyes.

Continued on page 7

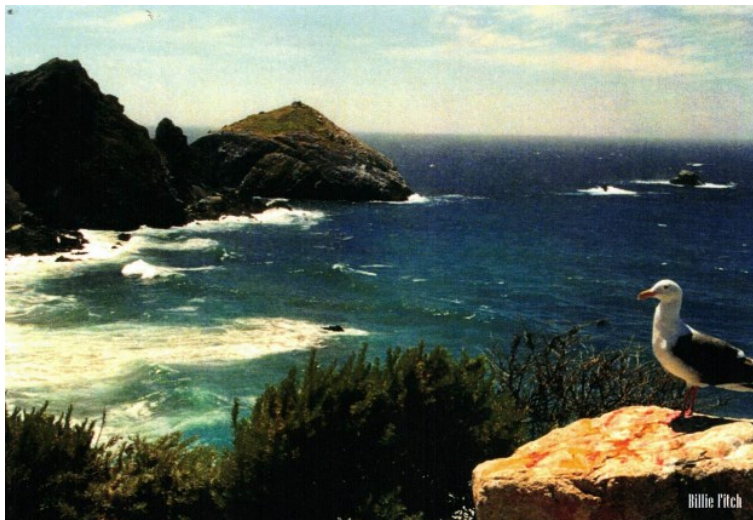
As Christians, this diversity of people, shapes who we are and what we are about in the world now. It calls us to a mission of reconciling all peoples to one another and to God. It challenges us to embody an alternative to the racial, national, and cultural divisions that permeate our world today. It calls us to be the somebodies that do something in the name of Jesus Christ because apparently nobody else seems willing to take a stand for what is right and just. Article VI of the Social Principles of our United Methodist Book of Discipline, the World Community, in paragraph 165 tells us that God's world is one world. And because of the technology revolution where we are globally living in real-time, we cannot afford to live an isolationist lifestyle. What happens in other corners of the globe can have an immediate impact on us here in America. The Discipline says that we, as a people and a church are confronted with problems that will not wait for answers. Problems such as injustice, war, exploitation, privilege, population, international ecological crisis, proliferation of arsenals of nuclear weapons, development of trans-actional business organizations that operate beyond the effective control of any governmental structure, and the increase of tyranny in all its forms. The Discipline continues by saying that this generation must find viable answers to these and related questions if humanity is to continue on this earth, and that we must commit ourselves as a Church to the achievement of a world community that is a fellowship of persons who honestly love one another, and we must pledge ourselves to seek the meaning of the gospel in all issues that divide people and threaten the growth of world community. John's two visions in the Revelation reminds us that it is no longer just about the Nation of Israel. It's about the whole world and all of God's children regardless of where they call home.

We must do this even if it means we must go through great hardships, even if it means getting involved with injustices committed against innocents not only here in our own country but in other countries around the world. We must do this if we want someday to be among that great multitude of people from every nation, tribe, people, and language standing before the throne and the Lamb wearing white robes and waving palm branches. What a day of rejoicing that will be.

## Card Center in the Narthex:

By Billie Fitch

Scenery Cards with photos taken by Billie Fitch are still valuable (and appreciated) in our days of emails, texts and Facebook. Use then for Birthdays, Anniversaries, Graduations, and especially for our weekly Joys and Concerns. Price is just \$1.00 and all the money goes into the church treasury. Here is one of the cards below:





# Jeans for June!

By Marsha Hamacher

I want to start out by thanking everyone who has donated to the General Store in the last year. We have come so far from our beginning, expanding from a few donated clothes and some commonly needed food items to being able to offer quite an array of necessities to support the daily lives of our underhoused and under-supported clients. It is our joy to be the conduit from you and our community, the donors, to the wonderful and entertaining clients that we meet each week.

This next month, June, Pastor Scott has suggested naming Jeans for June because of the constant need we have for blue jeans for our gentlemen clients. Jean S, one of our clothes closet volunteers and manager of our children's clothing department, suggested that maybe we should call it June is not Just for Jeans because we're going to sneak another request or two in there, too! So, let's get started...



We have a lovely selection of women's jeans and most of our ladies can find a pair of good jeans from our present inventory. However, it would be great to have a few more pair of plain blue jeans in sizes 8 & 10 women's because those go for both teenagers and adult women. Our clients also just LOVE leggings all year long and these go very quickly. A great place to pick up leggings for the clothes closet is Costco. I was just there, and you can get two pair of leggings for \$18! All sizes from small to extra-large would be appreciated.

Our most urgent need in jeans is for men's sizes 30" through 34" waist and 30" and 32" lengths in each of those sizes. We have an abundance of larger sizes, so these specific smaller ones are the only ones we are requesting at this time. Again, Costco has some men's jeans for \$10.99, which is a pretty good price. Our biggest challenge is finding a 30-waist jean. When I poked through those jeans on my last Costco visit, the 32's and 34's were plentiful, but I could not find size 30 waist jeans at all. If anyone can scout out some of those, you would be our hero!

Now, I believe you remember that July is Shoe-ly, but we are out of women's size 9 and 9 ½ shoes right now! We have some summer sandals and shoes – I can update you on those when Shoe-ly comes along – but what is missing are casual, but sturdy, slip on shoes and hiking shoes for the ladies. You know, like the kind you have right by the door and use for everything from walking the dog to running to the store for groceries! I found a few at Walmart in my travels, but nothing as sturdy as I'd like, so if you have any about or want to add a pair to your shopping list, our clients would love you for it.







The men's shoe department is also in need of some assistance in sizes 10 ½ and 11. These are the most popular sizes, and our cupboard is nearly bare of the hiking shoes and work boots that the men most often choose. Our wonderful Robert, who combs the army/navy surplus stores for boots and shoes on sale, has been bringing us a good selection, but we can't always get enough in these particular sizes, and they often go out often the same day they come in! As with the women's shoes, we do have a number of summer shoes, so let's hold off on those until Shoe-ly and I can inventory them and put a list out then. If you see any shoes of the above descriptions and would like to put a smile on someone's face as they throw away their old, falling apart shoes or boots and walk out in a new pair, please feel free to bring them in!

We are busily organizing the clothes closet for the warmer months, if they ever get here, and are not seeing any other gaps in our inventory yet, but I'm sure those gaps will make themselves known! Until that time, please do hold off on bringing in general donations. We are working very hard to organize what we have and need the time and space to do that. Once we are ready for more general clothing donations, we will let you know. Till then, we will update you with specific requests like these.



In our Bedding and Household Items Dept. we are still in need of blankets, all sizes, sheets/pillowcases, and bath towels. As we also help folks who are moving into their own apartment (a real joy for us too!), we give out dishes and pots and pans so we can use those goods as well.

And, again, thank you all for being the wonderful, caring people you are who love to help your neighbors in need.

With much affection, your General Store team: Jean H, Manager, Jean S, Sue, Marsha, Debbie, and all the wonderful part time and drop-in volunteers who show up and say, "how can I help?"



# The Community United Methodist Church Port Hadlock needs you!



- Are you creative?
- Do you like to play with images, clip art and text boxes?
- Are you slightly computer savvy?

We are looking for help to update our website on a weekly basis. Once a redesign is completed, we need to keep the content up to date.



Website Design  
& Development

We anticipate that it would take more than an hour a week to update content and the program is user friendly and pretty intuitive.

If you have any questions or are you are the person, we are looking for contact Pastor Scott.

Pastor Scott at [cumc@olympus.net](mailto:cumc@olympus.net) or 360 385-1579.

Local

MISSION  
of the  
MONTH

2022

CUMC supports three local organizations: OlyCAP, Tri-Area Food Bank and ECHHO. We donate a minimum of \$100 each month to one of these three organizations in addition to donations collected from membership. In 2019 CUMC will begin donating \$100 each month to UMCOR as well to aid in natural disaster relief efforts. Following is the donation schedule for 2019 and the total amount donated each month:

January	ECHHO	\$ 500.00
February	Food Bank	\$ 500.00
March	OlyCAP	\$ 500.00
April	ECHHO	\$ 500.00
May	Food Bank	\$ 500.00
June	OlyCAP	\$
July	ECHHO	\$
August	Food Bank	\$
September	OlyCAP	\$
October	ECHHO	\$
November	Food Bank	\$
December	OlyCAP	\$

## FINANCE REPORT

By Larry Jensen

Financial Report for Newsletter		
2022 April Year to Date		04/30/22
<b>Income</b>		<b>\$47,865.53</b>
Pledges & Identifiable Donors	\$42,659.20	
Other Income	\$5,206.33	
<b>Expenses</b>		<b>\$42,396.79</b>
Apportionments	\$5,756.72	
Local Program Ministry	\$4,241.89	
Operating Expenses	\$14,401.99	
Personnel Expenses	\$17,996.19	
<b>Difference</b>		<b>\$5,468.74</b>

BIRTHDAYS	HOSPITALITY	OUR PRAYERS
6 Dale Kelley 11 Gerri Shaw 15 Stephen Chase 20 Deborah Shanks	5 12 19 26	* For the homeless, the hungry and the unemployed. * For Peace on Earth! * For wisdom for our leaders. * For employment for people struggling to find meaningful work. * For Healing and provisions for those who are suffering with COVID-19. * For protection of the medical front- line workers who are caring for patients with COVID -19 and variants.
ALTAR FLOWERS	LITURGISTS	
5 12 19 26	5 12 19 26	
COMMUNION SERVERS	SUNDAY SCHOOL	
	5 12 19 26	
COUNTERS	USHERS	
5 12 19 26	5 12 19 26	
GREETERS		
5 12 19 26		



### June LECTIONARY READINGS

#### June 5

Acts 2:1-21  
 Ps 104:24-34  
 Rom 8:14-17  
 John 14:8-17

#### June 12

Prov 8:1-4  
 Ps 8  
 Rom 5:1-5  
 John 16:12-15

#### June 19

1 Kings 19:1-15a  
 Ps 42  
 Gal 3:23-29  
 Luke 8:26-39

#### June 26

2 Kings 2:1-2,6-14  
 Ps 77:1-2,11-20  
 Gal 5:1,13-25  
 Luke 9:51-62

**Being the Somebodies Who Do Something In Jesus' Name**



June 2022

Sun	Mon	Tue	Wed	Thu	Fri	Sat
			1	2 1:30pm –3pm Bible Study, (Library) 7-8pm Al-Anon Meeting (Library)	3 Bell Choir 3:00 pm	4 Clothes Closet Hours: 10am to 1pm.
5 10:00am Worship 10:15am Sunday School 11:15am Fellow- ship )	6 Alzheimer Support Group, 10:30am-12 noon (Classroom)	7	8 6:30pm Admin/ Finance Council Meeting	9 1:30pm –3pm Study, (Library) 7-8pm Al-Anon Meeting (Library)	10 Bell Choir 3:00 pm	11 Clothes Closet Hours: 10am to 1pm
12 10:00am Worship 11:15am Fellow- ship )	13	14	15	16 ) 1:30pm –3pm e Bible Study (Library) 7-8pm Al-Anon Meeting (Library)	17 Bell Choir 3:00 pm	18 Clothes Closet Hours: 10am to 1pm
19 10:00am Worship 11:15am Fellow- ship FATHERS' DAY	20	21	22	23	24 Bell Choir 3:00 pm	25 Clothes Closet Hours: 10am to 1pm
26 10:00am Worship 11:15am Fellow- ship	27	28	30			

## The Essence of Prayer

[1 Peter 5:6-11](#)(

March 27, 2022

By [Bill Crowder](#)

When Abraham Lincoln became president of the United States, he was tasked with leading a fractured nation. Lincoln is viewed as a wise leader and a man of high moral character, but another element to his makeup, perhaps, was the foundation for everything else. He understood that he was inadequate for the task at hand. His response to that inadequacy? Lincoln said, “I have been driven many times upon my knees by the overwhelming conviction that I had nowhere else to go. My own wisdom and that of all about me seemed insufficient for that day.”

When we come to grips with the massive nature of life’s challenges and the severe limitations of our own wisdom, knowledge, or strength, we find, like Lincoln, that we are utterly dependent on Jesus—the One who has no limitations. Peter reminded us of this dependency when he wrote, “Cast all your anxiety on him because he cares for you” ([1 Peter 5:7](#)).

God’s love for His children, paired with His absolute power, make Him the perfect Person to approach with our frailties—and that’s the essence of prayer. We go to Jesus acknowledging to Him (and ourselves) that we’re inadequate and He’s eternally sufficient. Lincoln said he felt he “had nowhere else to go.” But when we begin to comprehend God’s great care for us, that’s wonderfully good news. We can go to Him!



Community United Methodist Church

Open Hearts Open Doors Open Minds

Mailing Address: P.O. Box 1165

Physical Address: 130 Church Lane

Port Hadlock, WA 98339

Phone: 360.385.1579

Church office email: [cumc@olympus.net](mailto:cumc@olympus.net)

Church Office Hours:

10am - 2pm, Tuesday - Friday

Web Site: [www.HadlockChurch.com](http://www.HadlockChurch.com)

**Learning Circle: 9:00am**

**Sunday Worship: 10:00 am**

**Sunday School: 10:15 am**

**Fellowship Time: 11:15 am**

Scott Rosekrans, Pastor

Email: [pastorscottrosekrans@gmail.com](mailto:pastorscottrosekrans@gmail.com)

Pastor’s Office Hours:

10 am - 3 pm, Monday & Wednesday

10 am - 6 pm, Tuesday