

# CREATING CONNECTIONS

The newsletter of  
Community United Methodist Church

Pastor's Pen



November 2021

## Building Community

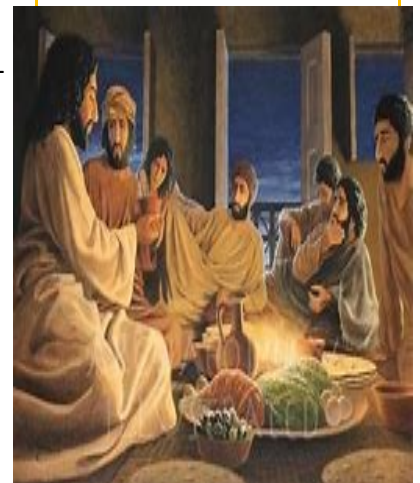
Building community. Just what does that mean? I've been thinking about community building a lot lately and how it applies to Community United Methodist Church. First, I think it applies to how we've built CUMC into the kind of church it is today. We started with a solid foundation and dedicated infrastructure, one devoted to the community of believers both past and present. When I was introduced to the Staff-Parish Relations Committee five and a half years ago they asked me what I thought my mission or focus would be for their church. I told them that based upon my experience as their former elected prosecutor that I saw the Tri-Area as underserved by the county and ground zero for homelessness, unemployment, drug and alcohol addiction, and crime. The community needed someone to step forward and lead the effort to put unity back into our community. How do you plan to do that they asked? I told them to give me six months to get my feet on the ground and I'd let them know how I think our church can step up and be that someone.

I met recently with some men from two other area churches who were interested in knowing more about our mission involvement as they had been hearing good things about us and wanted to know how they too could get their churches engaged in local missions. I cautioned them to start small and slow so as not to overwhelm their congregation. I showed them my infamous Jesus Cup and told them that everything I was about to show them started with spare change. Everyone, I told them, can drop a little spare change in the cup but if you ask for a more substantial donation without more you might scare them off. Show them how the spare change adds up and what it can do, and you'll generate excitement, I told them. I told them we picked out three local nonprofits and started sending them monthly checks from what was collected on Sunday mornings which allowed us to use our Jesus Cup spare change for other missions. It grew from there to where we started getting some serious folding money allowing us to have a greater impact. I told them the Jesus Cup was the seed that took root and grew to produce righteous fruit.



### Inside this issue:

Pastor's Pen	<b>1-3</b>
Generous, Loving donations	<b>3</b>
Altar Flowers	<b>4</b>
'Fun in Port Hadlock'	<b>5</b>
Tai Chi	<b>6</b>
Need Mens's Winter Coats	<b>6</b>
Mission of the Month	<b>7</b>
Finance Report	<b>7</b>
2022 Stewardship	<b>8</b>
Annual Stewardship Campaign	<b>9</b>
November birthdays, schedules, prayers	<b>10</b>
November Calendar	<b>11</b>
Monthly Devotional	<b>12</b>



## Pastor's Pen

(Continued from page 1)

I explained that what I was about to show them was a product of that righteous fruit and then I took them on a tour of our mission wing. Needless to say, they were duly impressed. I told them that our mission engagement, our many mini missions, has generated excitement within our congregation and has helped us to build a community of believers within the four walls of our church that are

dedicated to doing the good deeds that show our love for our neighbors.

Then I talked to them about Peter's Place, the tiny home village on church property right in our own backyard. I told them how we've partnered with Bayside Housing and Services and OlyCAP to be a resource for the residents of Peter's Place where we open our Clothes Closet and Food Pantry on Saturday mornings so residents can come in and look for things they might need. I told them how the residents and our volunteers interact with one

another and how new relationships have formed as we've gotten to know our neighbors and they've gotten to know us. We're participating in building a community and helping these residents learn or relearn how to live in community so that one day they can successfully transition to permanent housing and become a productive member of their new community.

We then talked about how we are building community within the Tri-Area and East Jefferson County. I told them that other people and other entities have noticed what's going on at Peter's Place and how they want to become a part of the effort to see this community of housing-challenged people succeed. I told them of the other service clubs who have gotten involved in raising money and collecting items for our mission wing. I told them of the random people from the community who call or show up on Saturday mornings with donations. And I told them of the other churches, like theirs, who are reaching out to see how they too can show the love of Christ to their neighbors. I explained how it now looked like the residents of the Tri-Area and East Jefferson County were coming together to be a part of building their community up into a place where they enjoyed living and raising their children, a community that really cared and looked for ways to make life a little easier for a neighbor who had fallen on hard times.

I closed by telling them that if they went where the Spirit led them the following was sure to happen. Their members would become SODS, the somebodies who do something, which would eventually turn them into POTS, part of the solution, they would enter the mission



Photos by Scott Rosekrans



(Continued on page 3)





(Pastor's Pen , continued)

field through engagement within the community, and (as I have just realized) they would become devoted and zealous disciples of Jesus Christ for the transformation of the world, even if that world is limited to building community. Faithfully, Scott



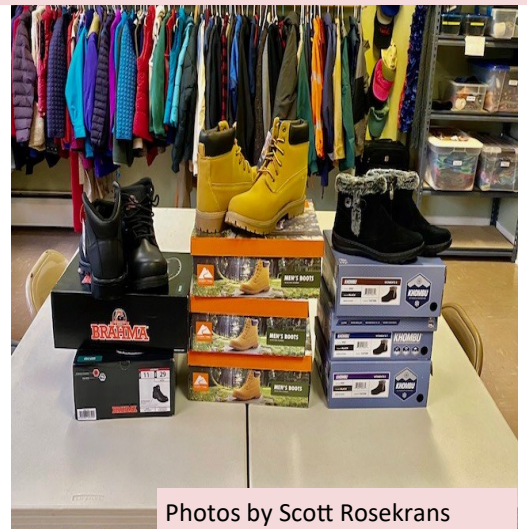
Photos by Scott Rosekrans

## Generous and Loving Donations



We blessed there beautiful quilts made by the loving hands of the Lutheran Church of the Redeemer for the residents of Peter's Place.

New boots purchased with a very generous donation.



Photos by Scott Rosekrans



## Recent Altar Flowers

We the members of CUMC and our on-line attendees greatly appreciate the lovely altar flower arrangements which are provided by our talented members. These beautiful flowers make our worship service a “special time” with the Lord.





## Clothes Closet

*"I needed clothes and  
you clothed me."*

Matthew 25:38

# Want to Have Some Fun in Port Hadlock?

by Jean Holtz

Want to have a lot of fun on any given Saturday morning? We know just the place! Come join our Mission Group at our weekly General Store at Community United Methodist Church. Honest, folks, we have a great time while serving people in our community who need a little assistance now and then. Ideally, we would like to have two persons every Saturday in each of our three General Store rooms. Why? Besides not wanting to keep all the fun to ourselves, the number of store visitors we get each week at the General Store has really increased. We've gone from four or five visitors a week to ten to thirteen visitors! As shoppers browse in all three rooms - the clothing room, the food room and the bedding/general goods room - we need to have assistants in each room.

### HERE'S WHAT WE'RE LOOKING FOR IN OUR STORE VOLUNTEERS:

- People who genuinely like meeting and getting to know diverse people.
- People with the ability to commit to an entire three-hour shift.
- People who can be on their feet for three hours (although we have plenty of chairs, we generally are so busy or excited, we don't sit a lot – if our workers need to, they are always welcome to)
- People who are fully vaccinated.
- People who can be a good example of mask wearing.

### HERE'S WHAT WE DO:

- Help shoppers find what they are looking for on that day.
- Sort and label clothes, shoes and other donated garments, separating out unusable ones.
- Unpack and sort bags and boxes of food, stock shelves Sort size, label bedding & camping goods.  
Take requests from clients for items that they might need to see if it is possible to find those items.
- Give our shoppers a fully accepting, non-judgemental welcome, visit & send-off for the day.
- You can sign up for one or more Saturday morning(s) each month, just see Jean Holtz to get on the schedule.

**That's all it takes to have yourself a memorable and fun experience on a Saturday morning in Port Hadlock.**

**To volunteer, contact Jean Holtz at [jholtz3444@gmail.com](mailto:jholtz3444@gmail.com)**





**Tai Chi.** If you are interested in taking Tai Chi or just want to check it out to see if it is for you we're going to give it a try beginning on Wednesday, October 13th, at 2:00 p.m. in the Sanctuary/Narthex . The class is kindly taught by Siochain.



## We Need WINTER Coats for MEN at the Clothes Closet!!



All Men's Winter Coats will be welcome that are in good condition. We will accept any Men's coat in any size; However, sizes Large and Extra Large are the most asked for.



Local

MISSION  
*of the*  
MONTH

2021

CUMC supports three local organizations: OlyCAP, Tri-Area Food Bank and ECHHO. We donate a minimum of \$100 each month to one of these three organizations in addition to donations collected from membership. In 2019 CUMC will begin donating \$100 each month to UMCOR as well to aid in natural disaster relief efforts. Following is the donation schedule for 2019 and the total amount donated each month:

January:	ECHHO	\$ 300.00
February:	Food Bank	\$ 200.00
March:	OlyCAP	\$ 500.00
April:	ECHHO	\$ 500.00
May:	Food Bank	\$ 500.00
June:	OlyCAP	\$500.00
July:	ECHHO	\$360.00
August	Food Bank	\$634.50
September	OlyCAP	\$300.00
October	ECHHO	\$500.00
November	Food Bank	\$
December	OlyCAP	\$

## FINANCE REPORT

By Larry Jensen

09/30/21

2021 year to date

## Income

\$87,863.63

Pledges &amp; Identifiable Donors

\$68,835.63

Other Income

\$19,028.00

## Expenses

\$92,228.32

Apportionments

\$11,565.44

Local Program Ministry

\$10,224.19

Operation Expenses

\$34,590.34

Personnel Expenses

\$35,848.35

Deficit

-\$4,364.69



## 2022 Stewardship Campaign

Well, it's that time of the year when we hold our annual Stewardship Campaign asking you to fill out those pledge cards to give us an idea as to what you think you'll be able to do financially to support the church. I've always wondered about the timing as it's always around the time the Christmas decorations start going up in all the stores to remind you of your other financial obligations.

Not to worry as your church is doing well. We consistently pay our bills, send in our monthly apportionment to the Conference, and have a nice reserve for any emergencies. Your church leadership have been good stewards of your hard-earned money as we have engaged in several projects over the past five years updating and improving our physical plant. We would like to turn our attention towards updating and improvements to the parsonage. Earlier this year we had to replace the heat pump which finally went out and a recent inspection shows that some normal wear and tear needs to be addressed.

In wondering what you should give I'll refer you to what the Apostle Paul said in 2 Corinthians 8: 12-15. *A gift is appreciated because of what a person can afford, not because of what that person can't afford, if it's apparent that it's done willingly. It isn't that we want others to have financial ease and your financial difficulties, but it's a matter of equality. At the present moment, your surplus can fill the deficit so that in the future their surplus can fill your deficit. In this way there is equality. As it is written, "The one who gathered more didn't have too much, and the one who gathered less didn't have too little."* What the Apostle is saying is that your giving should be done willingly and based upon what you can afford. During times of personal surplus, you can generously give more, and during times of belt tightening you give what you can so as not to cause any distress to yourself. Rest assured that during those times there will be people who are in a position to give generously from their surplus just as you may have once done. Paul is saying that it will all work out in the end if the giving is done for the right reasons.

That's why I don't worry, and you hear me say almost every Sunday that we are doing fine financially and that through your generosity we are able to do the many things we do as a church in this community and to the ends of the earth. Thank you for your prayers, your time, and your talents.

Faithfully,

Scott







## Annual Stewardship Campaign

Thank you each and everyone of you who have generously given to our church to help us continue serve God this past year. Your gifts have helped us to continue our important mission in the community your gifts have made a difference!

I wanted to take a minute to remind you that it is the time of year to think about making a financial a pledge or financial gift to help our church make a difference in people's lives next year.

We are working on the annual campaign and will be sending out a letter and pledge card asking you for a gift to support our church. Please start prayerfully considering a pledge or gift for the new year.

May God bless all of you for your faithful gifts.

Yours in Christ,

Lori Oberlander

Stewardship



BIRTHDAYS		HOSPITALITY	OUR PRAYERS
2	Wendi Metzer	7	* For the homeless, the hungry and the unemployed.
5	Richard Christopher	14	
9	Bill Metzer	21	
10	Janet Stevenson	28	
11	Barb Sweet		
12	Carolyn Allen		* For Peace on Earth!
21	Cindi Jones	7	* For wisdom for our leaders.
ALTAR FLOWERS		LITURGISTS	* For employment for people struggling to find meaningful work.
7		7	
14		14	
21		21	
28		28	
COMMUNION SERVERS		SUNDAY SCHOOL	* For Healing and provisions for those who are suffering with COVID-19.
		7	
		14	
		21	
		28	
COUNTERS		USHERS	* For protection of the medical front-line workers who are caring for patients with COVID-19 and variants.
7		7	
14		14	
21		21	
28		28	
GREETERS			
7			
14			
21			
28			



### November LECTIONARY READINGS

#### Nov 7

Ruth 3:1-5; 4:13-17  
Ps 127  
Heb 1:1-4; 2:5012  
Mark 10:2-16

#### Nov 14

1 Sam 1:4-20  
1 Sam 2:1-10, Ps 113  
Heb 10:11-14 (15-18)  
Mark 13:1-8

#### Nov 21

2 Sam 23:1-7  
Ps 132:1-12  
Rev 1:4b-8  
John 18:33-37

#### Nov 28

Jer 33:14-16  
Ps 25:1-10  
1 Thess 3:9-13  
Luke 21:25-36



## November 2021

(Regular meetings are listed; however because of Covid-19 virus, these are temporarily cancelled.)

Sun	Mon	Tue	Wed	Thu	Fri	Sat
	1	2	3 Siochain 2 pm Tai Chi class (Narthex)	4 12:30pm Women's A.A. (Library)	5	6 Clothes Closet Hours: 10am to 1pm.
7 10:00am Wor- ship 10:15am Sunday School 11:15am Fellow- ship PIT Community Choir 2-3pm (Sanctuary)	8 Alzheimer Support Group, 10:30am-12 noon (Classroom)  Rain Shadow Chorale 6:30p-9:30p (Sanctuary)	9 2:00pm Chicks in Stitches  5:30-6:30pm AA Meeting (Library)	10 Siochain 2 pm Tai Chi class (Narthex)	11 12:30pm Women's A.A. (Library)	12	13 Clothes Closet Hours: 10am to 1pm
14 10:00am Wor- ship 11:15am Fellow- ship PIT Community Choir 2-3pm	15 Rain Shadow Chorale 6:30p-9:30p (Sanctuary)	16 5:30-6:30pm AA Meeting (Library)	17 Siochain 2 pm Tai Chi class (Narthex)	18 12:30pm Wom- en's A.A. (Library)	19	20 Clothes Closet Hours: 10am to 1pm
21 UMCOR Offering 10:00am Wor- ship 11:15am Fellow- ship	22 Rain Shadow Chorale 6:30p-9:30p (Sanctuary)  SPRC Meeting	23 2:00pm Chicks in Stitches 5:30-6:30pm AA Meeting (Library)  Mission Meeting 7pm	24 Siochain 2 pm Tai Chi class (Narthex)	25 1:30pm Women's A.A. (Library)	26	27 Clothes Closet Hours: 10am to 1pm
28 9:00am Music Class 10:00am Wor- ship 11:15am Fellow- ship	29 Rain Shadow Chorale 6:30p-9:30p (Sanctuary)	30 5:30-6:30pm AA Meeting (Library)  Mission Meeting (Lori) 7 pm	31			

## Joyful Learning

(Romans 12:2)

September 29th, 2021

By Jennifer Benson Schuldt

In the city of Mysore, India, there's a school made of two refurbished train cars connected end-to-end. Local educators teamed up with the South Western Railways Company to buy and remodel the discarded coaches. The units were essentially large metal boxes, unusable until workers installed stairways, fans, lights, and desks. Workers also painted the walls and added colorful murals inside and out. Now, sixty students attend classes there because of the amazing transformation that took place.

Something even more amazing takes place when we follow the apostle Paul's command to "be transformed by the renewing of your mind" (Romans 12:2). As we allow the Holy Spirit to uncouple us from the world and its ways, our thoughts and attitudes begin to change. We become more loving, more hopeful, and filled with inner peace (8:6).

Something else happens too. Although this transformation process is ongoing, and often has more stops and starts than a train ride, the process helps us understand what God wants for our lives. It takes us to a place where we "will learn to know God's will" (12:2 nlt). Learning His will may or may not involve specifics, but it always involves aligning ourselves with His character and His work in the world.

*Nali Kali*, the name of the transformed school in India, means "joyful learning" in English. How is God's transforming power leading you to the joyful learning of His will?



### Community United Methodist Church

Open Hearts Open Doors Open Minds

Mailing Address: P.O. Box 1165

Physical Address: 130 Church Lane

Port Hadlock, WA 98339

Phone: 360.385.1579

Church office email: cumc@olympus.net

Church Office Hours:

10am - 2pm, Tuesday - Friday

Web Site: [www.HadlockChurch.com](http://www.HadlockChurch.com)

**Learning Circle: 9:00am**

**Sunday Worship: 10:00 am**

**Sunday School: 10:15 am**

**Fellowship Time: 11:15 am**

Scott Rosekrans, Pastor

Email: [pastorscottrosekrans@gmail.com](mailto:pastorscottrosekrans@gmail.com)

Pastor's Office Hours:

10 am - 3 pm, Monday & Wednesday

10 am - 6 pm, Tuesday